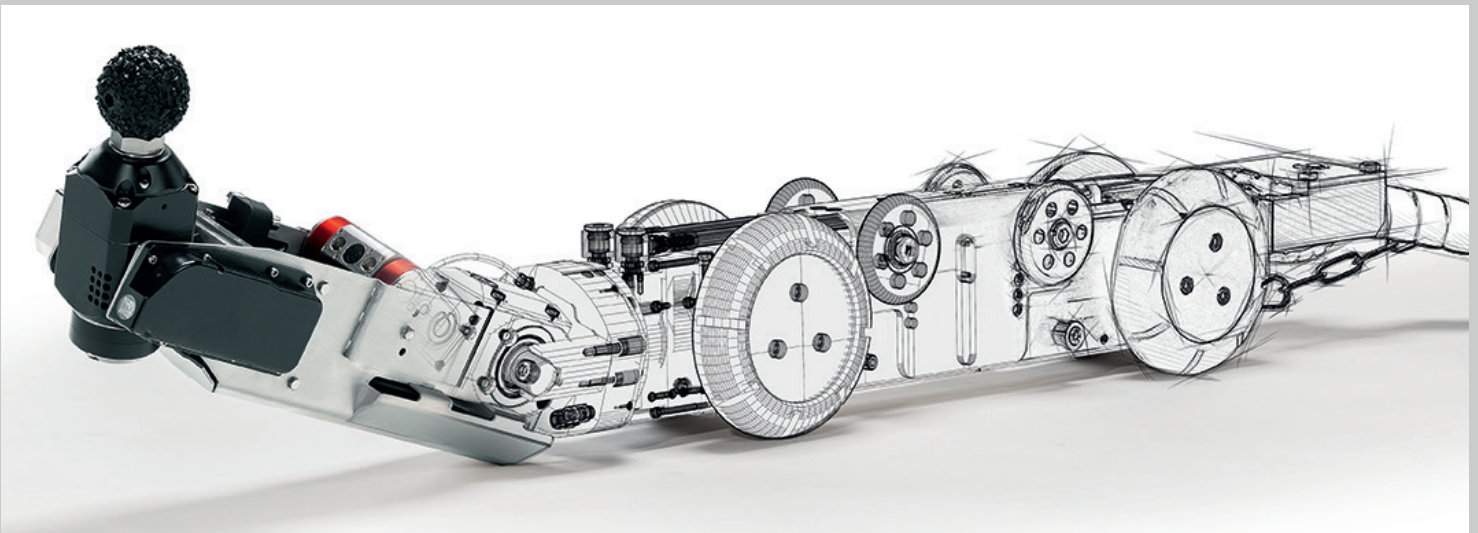
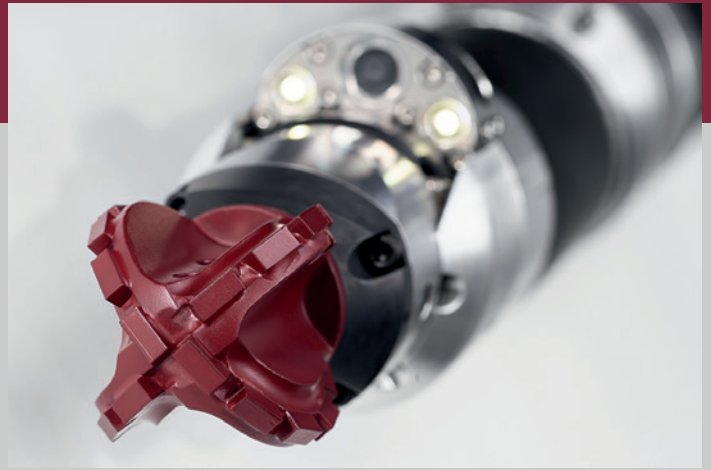
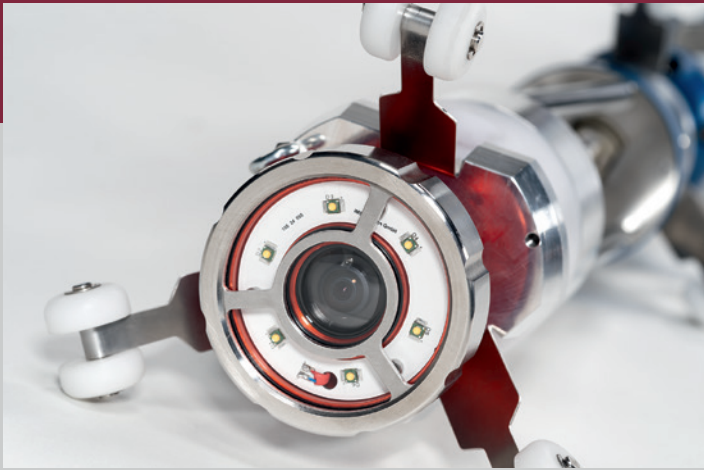


IMS

ROBOTICS

Our solutions for your sewer
rehabilitation challenges



ims-robotics.de

Content overview

IMS Robotics Group - the Companies.....4

IMS Robotics Group - Vision & Mission5

Technology for the house connection.....6-15

Product overview.....6-7

WIPERcam basic.....8

MICRO S light.....8

MICRO S light plus.....9

MICRO S automatic.....9

MICROpremium flex.....10-11

MICROautomatic.....12

MICROautomatic plus.....12

MICROpremium.....13

NANOeasy.....14

MICROlight.....14

MICROlight plus.....15

Technology for the main sewer.....16-18

DRIVE.....16

DRIVE 4.....16

DRIVEplus.....17

Satellite system STL.....17

TURBO 3.....18

TURBO 4.....18

UV curing systems.....19-21

MICROcure.....19

UV 5200.....20

UV 7800.....20

UV 8000 Compact.....21

UV 12000 Compact.....21

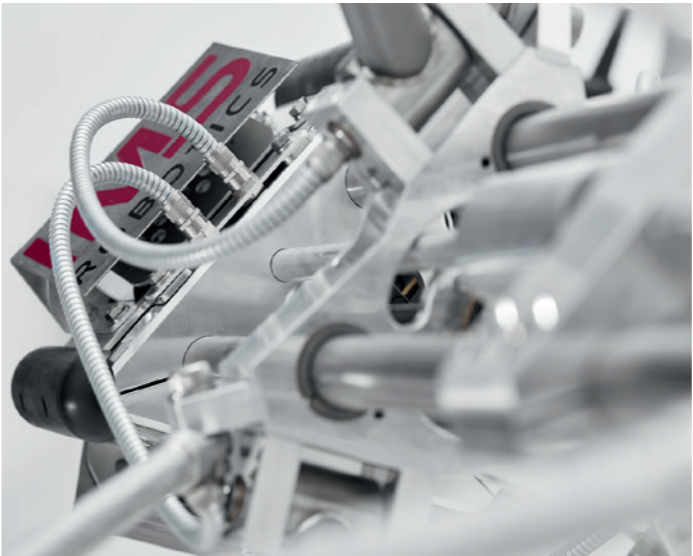
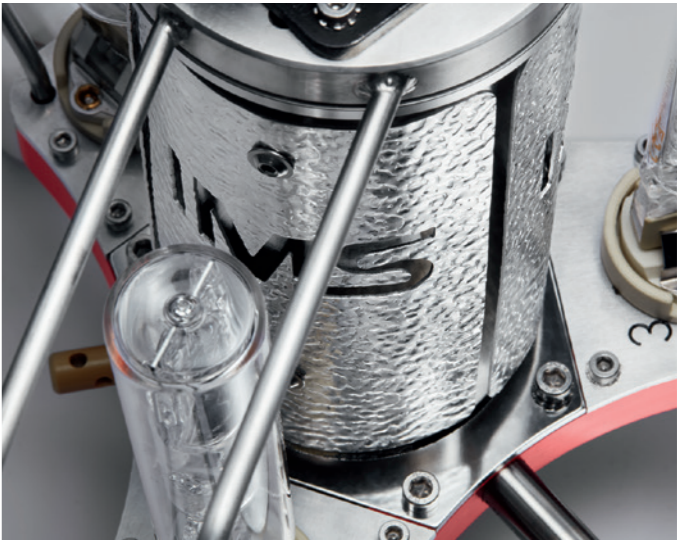
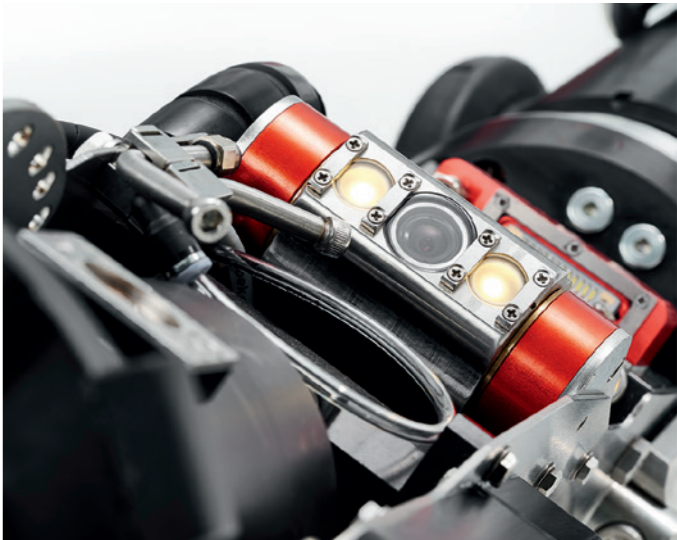
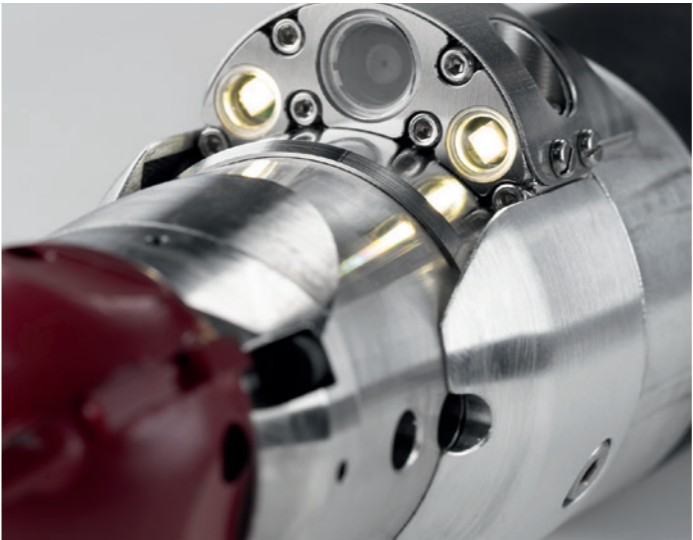
ILZ - Metal cutting.....22

Kardiam by IMS - Cutting tools.....23

Hurricane ® Trenchless Technology.....24 - 25

Vehicle development.....26

Rental park and Service.....27



The IMS Robotics Group Companies



IMS Robotics Group

The IMS Robotics Group specialises in the development, manufacturing and worldwide distribution of sewer rehabilitation robots and UV curing systems. The final assembly of the complex products takes place at our headquarter in Ottendorf-Okrilla near Dresden in Germany.

The company is broadly positioned with subsidiaries and associated companies in Germany, Europe and around the world. In addition, IMS Robotics maintains a large network of reliable and highly professional partner companies in development, manufacturing and international sales. This allows for product diversity and vertical range of manufacture as well as successful global marketing of our highly efficient and reliable systems.

We have made it our mission to offer our customers the perfect solution for all sewer rehabilitation needs. This is reflected in our extensive product range. If you require a solution to work in house connection pipes, main sewers or an UV curing system, mobile or permanently installed in a vehicle – we provide solutions for all requirements.

You have questions or would like to know more about us and our products? You can reach us by phone on +49 35205 75550 or by e-mail at contact@ims-robotics.de.

IMS Vision Statement

It is our vision to equip professionals in the sewer rehabilitation industry with the most intelligent and powerful technology for them to make a valuable contribution in maintaining our natural environment and health. We start where others quit.









IMS Mission Statement

We secure the underground infrastructure by delivering the most powerful products to our partners in sewer rehabilitation for avoiding damages to the environment and humans.

At the same time, it is our aim to deliver the best and most reliable serial products, as well as highly specialised machines to our customers.

Our strong team is incredibly committed to achieve the impossible. We venture to look below the surface and go the extra mile. We bring our machines to work where common technologies reach their limits.

IMS Technology for the house connection

Technical Specifications	NANOeasy	MICROlight	MICROlight plus	MICROautomatic	MICROautomatic plus	MICROpremium	MICRO S light	MICRO S light plus	MICRO S automatic	MICROpremium flex
										
Flexibility 90° bend in DN 100 / 4" (inner diameter)	✓	✓	✓	✓	✓	✓	✓	✓	✓	✓
Range of operation in mm / inch	70 - 150 / 2,8" - 6"	80 - 250 / 3" - 10"	80 - 250 / 3" - 10"	80 - 250 / 3" - 10"	80 - 250 / 3" - 10"	80 - 250 / 3" - 10"	75 - 250 / 2,9" - 10"	75 - 250 / 2,9" - 10"	80 - 250 / 3" - 10"	80 - 250 / 3" - 10"
Length supply hose in m / ft optional extension m / ft	15 / 49 25 / 82	30 / 98	30 / 98	30 / 98	50 / 164 70 / 230	50 / 164 70 / 230	30 / 98 50 / 164	30 / 98 50 / 164	50 / 164	50 / 164 70 / 230
Remote control hand held (1 Joystick)	—	✓	✓	✓	✓	—	—	—	—	—
Remote control professional box (2 Joysticks)	—	—	—	—	✓	—	✓	✓	✓	✓
Remote control with touchpanel	—	—	—	—	—	✓	—	—	—	✓
Colour camera with LED and permanent air cleaning	✓	✓	✓	✓	✓	✓	✓	✓	✓	✓
Water cleaning for camera	—	—	—	✓	✓	✓	—	—	✓	✓
Pneumatic bracing bladder (numbers)	1	1	1	2	2	2	1	1	2	2
Feeding function in mm / inch	—	—	50 / 2"	100 / 4"	100 / 4"	100 / 4"	—	100 / 4"	100 / 4"	100 / 4"
Creeping/Climbing function	—	—	—	✓	✓	✓	—	—	✓	✓
Nitrogen monitoring	—	✓	✓	✓	✓	✓	✓	✓	✓	✓
More										
Supply hose	soft	soft	soft	soft	integrated push rod	integrated push rod	integrated push rod	integrated push rod	integrated push rod	integrated push rod
Weight of the system (approx.)	38 kg / 45 kg	47 kg	47 kg	55 kg	71 kg	71 kg / 78 kg	62 kg / 68 kg	62 kg / 68 kg	68 kg	81 kg
Dimensions (L x B x H)	495 x 770 x 877 mm 19" x 30" x 35"	660 x 550 x 800 mm 26" x 22" x 32"	660 x 550 x 800 mm 26" x 22" x 32"	660 x 550 x 800 mm 26" x 22" x 32"	790 x 630 x 1050 mm 31" x 25" x 41"	790 x 630 x 1050 mm 31" x 25" x 41"	850 x 510 x 1200 mm 34" x 20" x 47"	850 x 510 x 1200 mm 34" x 20" x 47"	850 x 510 x 1200 mm 34" x 20" x 47"	790 x 630 x 1050 mm 31" x 25" x 41"
Options										
Weight of the system (approx.)	—	—	—	—	—	✓	✓	✓	✓	✓
Expansion in mm / inch	150 / 6"	200 / 8" 250 / 10"	200 / 8" 250 / 10"	200 / 8" 250 / 10"	200 / 8" 250 / 10"	200 / 8" 250 / 10"	200 / 8" 250 / 10"	200 / 8" 250 / 10"	200 / 8" 250 / 10"	200 / 8" 250 / 10"
Extension for remote control	5 m / 16 ft	5 m / 16 ft 10 m / 33 ft	5 m / 16 ft 10 m / 33 ft	5 m / 16 ft 10 m / 33 ft	5 m / 16 ft 10 m / 33 ft	5 m / 16 ft	5 m / 16 ft 10 m / 33 ft	5 m / 16 ft 10 m / 33 ft	5 m / 16 ft 10 m / 33 ft	5 m / 16 ft

WIPERcam basic

DN 50 - 110 / 2" - 4,3"



MICRO S light

DN 75 - 250 / 2,9" - 10"



MICRO S light plus

DN 75 - 250 / 2,9" - 10"



MICRO S automatic

DN 75 - 250 / 2,9" - 10"



- Removable camera head with wiper (single cycle and interval)
- Suitable for 90° bends from DN 50
- 25m break-proof supply hose
- Photo and video recording, dimmable LED
- Integrated meter counting
- Data input in the live image using the optional keyboard
- Data export via USB
- Battery allows up to 4,5 hours of operation

Optional:

- Extension cable for Wipercam basic

- Excellent flexibility in pipe bends (90° in DN 100 / 4" inner diameter)
- Maximum mobility, endless rotation of the cutting head
- 30 m (98 ft) or 50 m (164 ft) supply hose on cable reel
- Cutting module with radial bracing bladder
- Integrated colour camera with permanent air cleaning and optional water cleaning
- Outer diameter of the cutter module is just 60 mm
- Supply hose with integrated push rod

Optional:

- Expansions DN 200 / DN 250
- Mini PC and video software
- Water equipment
- 5 m / 10 m extension cable for control unit
- Meter counting

- Excellent flexibility in pipe bends (90° in DN 100 / 4" inner diameter)
- 30 m (98 ft) or 50 m (164 ft) supply hose on cable reel
- Maximum mobility
- Cutter with radial bracing bladder and approx. 100 mm axial feed for creeping function
- Integrated colour camera with permanent air cleaning and optional water cleaning
- Outer diameter of the cutter module is just 60 mm
- Supply hose with integrated push rod

Optional:

- Expansions DN 200 / DN 250
- Mini PC and video software
- Water equipment
- 5 m / 10 m extension cable for control unit
- Meter counting

- Automatic and manual feed, climbing and creeping function (100 mm / 4" axial feed)
- Outer diameter of the cutter module is just 60 mm
- 50 m (164 ft) supply hose on cable reel
- Integrated colour camera with permanent air cleaning and additional water cleaning
- Powerful air-operated cutting motor (also usable for stone and concrete)
- Very precise control of the cutter by optional 2 Joysticks
- Expansions DN 200 / DN 250 included
- Mini PC and video software included

Optional:

- 5 m / 10 m extension cable for control unit
- Meter counting

MICROpremium flex - the modular system

In addition to its modularity, MICROpremium flex boasts short conversion times, space saving and an excellent price-performance ratio.

One cable drum and one control unit for milling/cutting work, ultra-high water jetting and rehabilitation operations – this is unique.

Our systems with CLEANER ultra-high pressure water technology, are used by customers throughout Europe and are successfully deployed on a variety of construction sites.

Technical Specifications:

- 50 m (164 ft) or 70 m (230 ft) supply hose on cable reel
- Stable protection case for control unit with Video-PC, HDMI-display and touch screen (2 multifunctional joysticks)
- Pneumatic and electrical lead-through and manual brake

Optional:

- 5 m (16 ft) extension cable for control unit



Cutting module MICROpremium

DN 80 - 250 / 3" - 10"

- Excellent flexibility in pipe bends (90° in DN 100 / 4", inner diameter)
- Automatic and manual feed, climbing and creeping function (100 mm / 4" axial feed)
- 400° turning movement and approx. 90° swivelling movement with stops
- Permanent camera cleaning with air and connectible water flushing
- Colour camera with LED



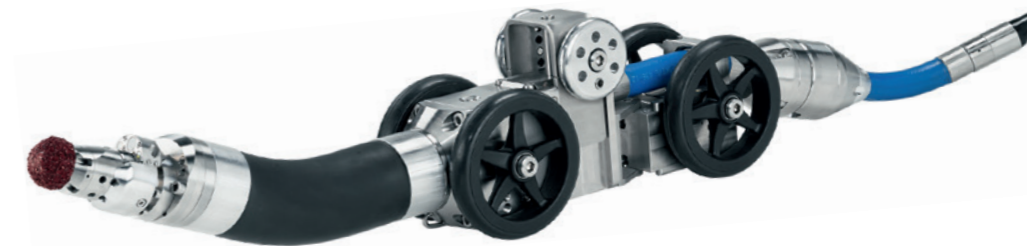
Optional MICROpremium:

- Expansions for DN 200 and DN 250

Cutting module MICROmotion

DN 150 - 400 / 6" - 16"

- 400° electrically driven rotation/servo-pneumatic cutting lift arm approx 200 mm
- Cornering by articulated joint
- Carriage with pneumatic stabilizer
- Colour Camera with LED and additional lightning



Ultrahigh-pressure head CLEANER

DN 100 - 250 / 4" - 10" , up to 2500 bar

- Flexibility in bends in PVC pipe from DN 125 (depending on the pipe condition)
- Rotating-Swivelling-Drive, endless rotation, swivelling movement 45°, speed adjustable
- Colour camera with adjustable LED and wiper



Optional:

- Bracing unit for CLEANER

MICROautomatic

DN 80 - 250 / 3" - 10"



- Usable in vertical pipes
- Excellent flexibility in pipe bends (90° in DN 100 / 4" inner diameter)
- Automatic and manual feed, climbing and creeping function (axial feed approx. 100 mm / 4")
- 30 m (98 ft) supply hose on cable reel
- Integrated colour camera with LED (cleaning with permanent air and additional water flushing)
- Powerful air-operated cutting motor (also usable for stoneware and concrete)
- Flexible cable remote control with detachable monitor and joystick for precise control

Optional:

- Expansions DN 200 / DN 250
- 5 m / 10 m extension cable for control unit
- MICROautomatic additionally with 30 m hose extension and integrated push rod 11 mm / 50 m

MICROautomatic plus

DN 80 - 250 / 3" - 10"



- Powerful air-operated cutting motor (also usable for stoneware and concrete)
- Excellent flexibility in pipe bends (90° in DN 100 / 4" inner diameter)
- 50 m (164 ft) or 70 m (230 ft) supply hose on cable reel
- Automatic and manual feed, climbing and creeping function (axial feed approx. 100 mm / 4")
- 400° turning movement and approx. 90° swivelling movement with stops
- Precise cutting control by 2 Joysticks
- Colour camera with LED (permanent air cleaning and connectible water flushing)

Optional:

- Expansions DN 200 / DN 250
- 5 m / 10 m extension cable for control unit
- MICROautomatic plus additionally with vehicle installation option

MICROpremium

DN 80 - 250 / 3" - 10"



- 50 m (164 ft) or 70 m (230 ft) supply hose on cable reel
- Automatic and manual feed, climbing and creeping function (axial feed approx. 100 mm / 4")
- Powerful air-operated cutting motor
- Excellent flexibility in pipe bends (90° in DN 100 / 4" inner diameter)
- 400° turning movement and approx. 90° swivelling movement with stops
- Cable remote control „IMS Touch" with 2 Joysticks and transport case
- Camera cleaning with permanent air and additional water flushing

Optional:

- Expansions DN 200 / DN 250
- 5 m extension cable for control unit
- Meter counting



Control case MICROpremium



Remote control MICROautomatic

NANOeasy

DN 70 - 150 / 2,8" - 6"



- Mobile cutting system for small pipes in the indoor installation
- Excellent flexibility in pipe bends (90° in DN 100 / 4" inner diameter)
- Optionally with 15 m / 49 ft or 25 m / 82 ft supply hose
- Internal camera with permanent air cleaning
- Manual control by movable steering wheel along the supply hose
- Powerful air-operated cutting motor (also usable for stone and concrete)

Optional:

- Expansion DN 150 / 6"

MICROlight

DN 80 - 250 / 3" - 10"



- Excellent flexibility in pipe bends (90° in DN 100 / 4" inner diameter)
- 400° turning movement and approx. 90° swivelling movement with stops
- Also usable in vertical pipes
- 30 m (98 ft) supply hose on cable reel
- Integrated colour camera with permanent air cleaning
- Powerful air-operated cutting motor (also usable for stone and concrete)
- Flexible cable remote control with detachable monitor and joystick for precise control

Optional:

- Expansions DN 200 / DN 250
- 5 m / 10 m extension cable for control unit
- Integrated push rod 11 mm / 50 m
- Upgrade package to MICROautomatic

MICROlight plus

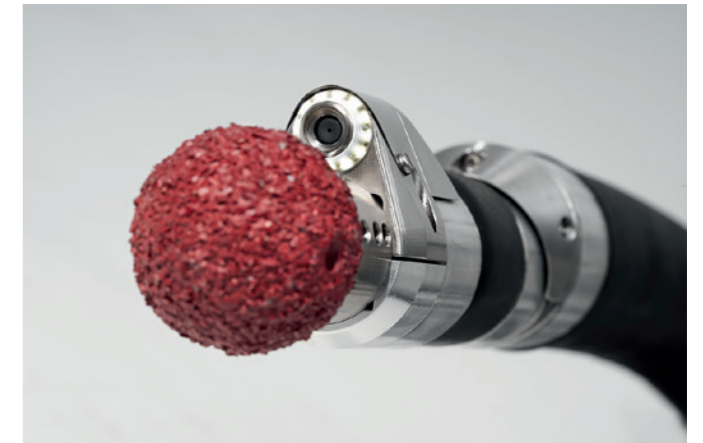
DN 80 - 250 / 3" - 10"



- Excellent flexibility in pipe bends (90° in DN 100 / 4" inner diameter)
- 400° turning movement and approx. 90° swivelling movement with stops
- Also usable in vertical pipes
- Cutter with radial bracing bladder and approx. 50 mm axial feed for creeping function
- 30 m (98 ft) supply hose on cable reel
- Powerful air-operated cutting motor (also usable for stone and concrete)
- Flexible cable remote control with detachable monitor and joystick for precise control

Optional:

- Expansions DN 200 / DN 250
- 5 m / 10 m extension cable for control unit
- Integrated push rod 11 mm / 50 m



Remote control NANOeasy



Remote control MICROlight and MICROlight plus

DRIVE

DN 150 - 400 / 6" - 16"



- Very robust and mobile cutting system for small and medium sized sewers with 120 mm outer diameter
- Powerful air-operated cutting motor
- Up to 150 m supply hose
- Accurate cutting control with cable remote control with 2 joysticks for swivelling/turning and driving
- Electrically powered turning movement 400° / servo-pneumatic cutting arm swivelling approx. 200 mm
- Integrated colour camera with LED and additional lighting (with permanent air cleaning)

Optional:

- 5 m extension cable for control unit
- Water equipment
- Meter counting
- Automatic reeling and much more

DRIVE 4

DN 150 - 400 / 6" - 16"



- Self-propelled carriage with pneumatic stabilizer for better stability and traction
- 400° electrically driven rotary movement / approx. 200 mm (7.9") servo-pneumatic cutter arm lifting unit
- Up to 150 m supply hose
- Permanent internal pressure monitoring
- Colour camera with LED, additional lighting and permanent air cleaning
- Position sensors for carriage and rotating angle of the milling arm
- Carriage outside diameter is just 120 mm / 4.7"

Optional:

- Control case holder
- Motorised cable reel (optionally with control unit)
- Meter counter
- Rear view camera
- Head lights

DRIVEplus

DN 150 - 600 / 6" - 24"



- Mobile cutting system for small and medium sized sewers with 135 mm outer diameter
- Equipped with 2 exchangeable air-operated cutter motors
- Up to 150 m supply hose
- Swiveling camera with LED lighting and wiper blades
- Supply hose reel with pneumatic and electrical lead-through, manual brake and hand crank
- Pneumatic pressure rail for better stability and traction

Optional:

- Expansion DN 450 / DN 600
- 5 m extension cable for control unit
- Meter counting and backeye camera
- Water equipment
- Connection to rehabilitation packers and much more

Satellite system (STL)

DN 100 - 400 / 4" - 16"



- House installation / lateral DN 100 to DN 150
- Main sewer from DN 200 to DN 400
- Coupling elements with nominal widths DN 200 to DN 400 for connection to the main sewer cutting robot TURBO
- TURBO Universal control unit
- Nitrogen monitoring
- An electric hose drive with different wheel sets for the nominal widths DN 200 to DN 400
- Transport pipe for MICROautomatic plus or MICROpremium
- Rear view camera with lighting

TURBO 3

DN 200 - 800 / 8" - 31"



- Powerful air-operated cutting motor
- Outer diameter 180 mm
- Self-propelled carriage with 3 speed levels
- Carriage combinable with rehabilitation system MULTI-SAN
- Carriage with integrated position sensors
- Pneumatic pressure rail for better stability and traction
- Swiveling camera with LED lighting and wiper blades
- Front headlight, reversing sensor and backup camera
- Supply hose with 100 m
- Water equipment included

Optional:

- Expansion DN 450 / DN 600
- Expansions for egg-shaped sections
DN 250 / 375 - DN 500 / 750
- Data input unit with meter counting
- Connection to rehabilitation packers and much more

TURBO 4

DN 200 - 800 / 8" - 31"



- Powerful air-operated cutting motor for vehicle installation
- Water equipment included
- Automatic cable reel
- Integrated sensor technology for position display of carriage, cutting arm and cutting motor
- Pneumatic pressure rail for better stability and traction
- Swiveling camera with 2 high-power LED and wiper
- Data input unit with meter counting
- Rear-view backeye camera with LED lighting

Optional:

- IMS high-pressure technology IMS CLEANER
- Expansion carriage DN 700 / DN 800
- Connection to rehabilitation packers and much more

MICROcure

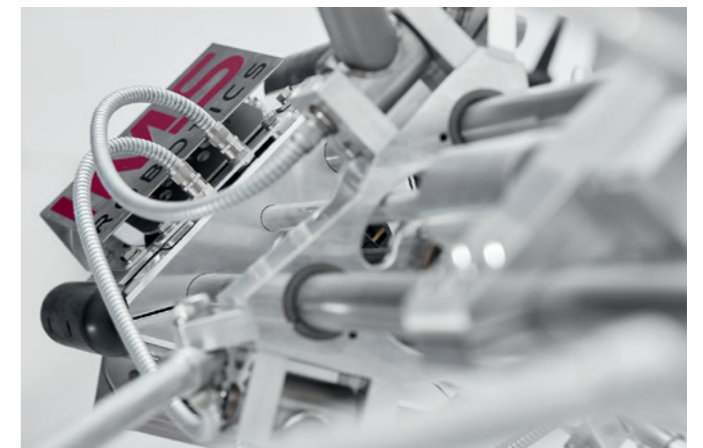
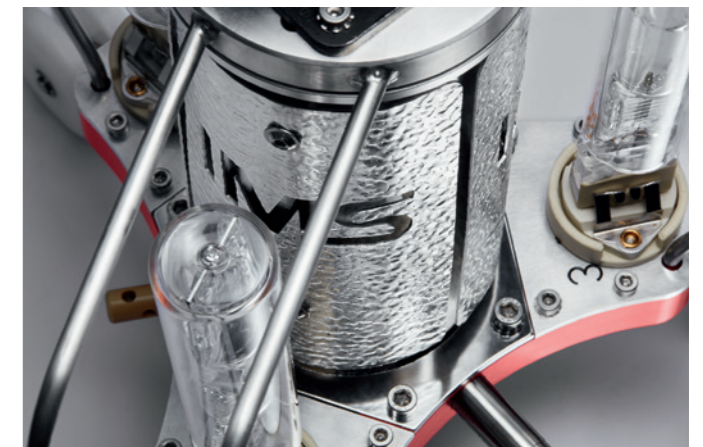
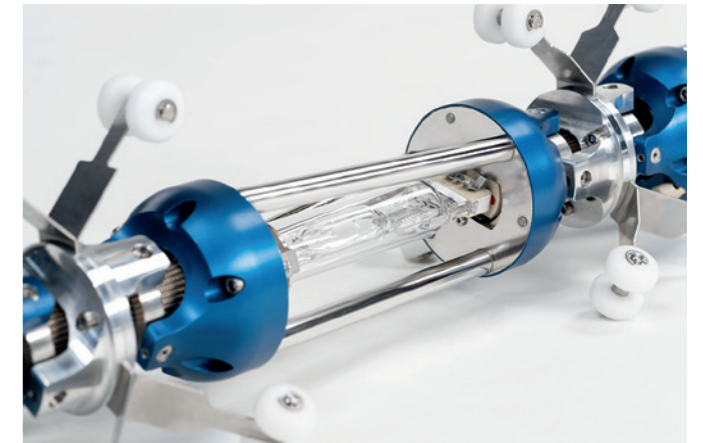
DN 75 - 300 / 3" - 11"



- Innovative LED curing system for the house connection
- Bendability in a 90-degree pipe in DN 100 relined
- Two LED heads with 400 or 800 Watts
- Download of the curing protocol via USB
- Possibility for remote maintenance via Wi-Fi hotspot
- Cooling of the unit via compressed air
- Cable reel with 70 meters of supply hose
- Documentation of length, temperature, inner pressure, speed, and electrical power
- Control unit with monitor and curing software

Optional:

- Connections to inversion drums



UV 5200

DN 150 - 600 / 6" - 24"
8 x 400 / 650 Watts



- 5200 watts power
- Up to 210 m / 689 ft cable length
- Temperature-resistant hybrid cable: with connectors on both sides
- Industrial control unit with touch operating panel
- Temperature resistant colour camera

Optional (Selection):

- Upgrade to IMS curing system UV 7800

UV 7800

DN 150 - 1200 / 6" - 47"
8 / 12 x 650 Watts



- 7800 watts power
- Up to 210 m / 689 ft cable length
- Temperature-resistant hybrid cable with connectors on both sides
- Temperature resistant colour camera
- Lamp operating hours counter

UV 8000 Compact

DN 150 - 1500 / 6" - 59"
8 x 400 / 650 / 1000 Watts



- 8000 watts power
- Up to 180 m / 590 ft cable length
- Temperature-resistant hybrid cable with connectors on both sides
- Air conditioning for cooling the cable drum
- Lamp operating hours counter

Optional (Selection):

- Monitors for front control unit
- Packer camera

UV 12000 Compact

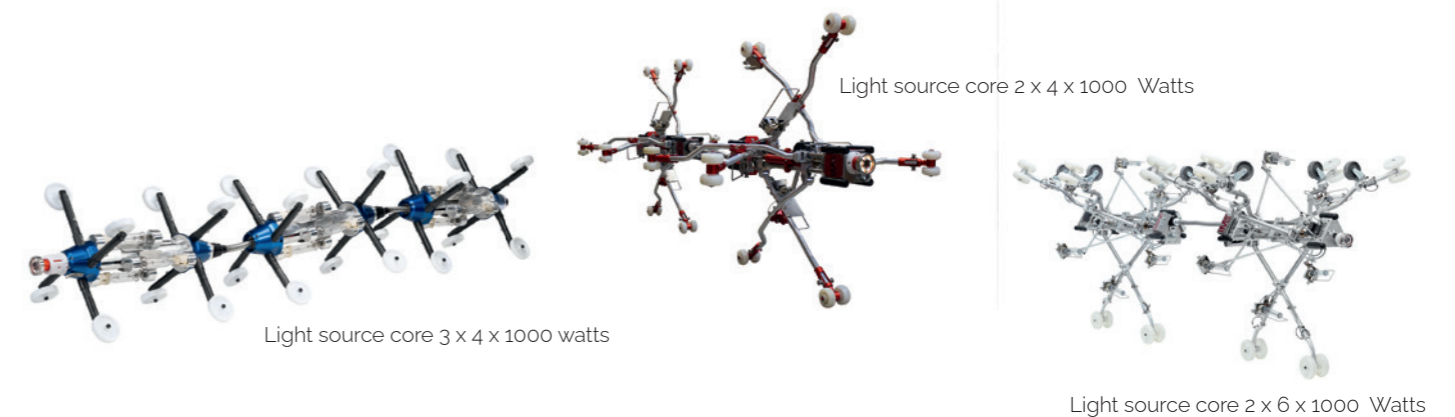
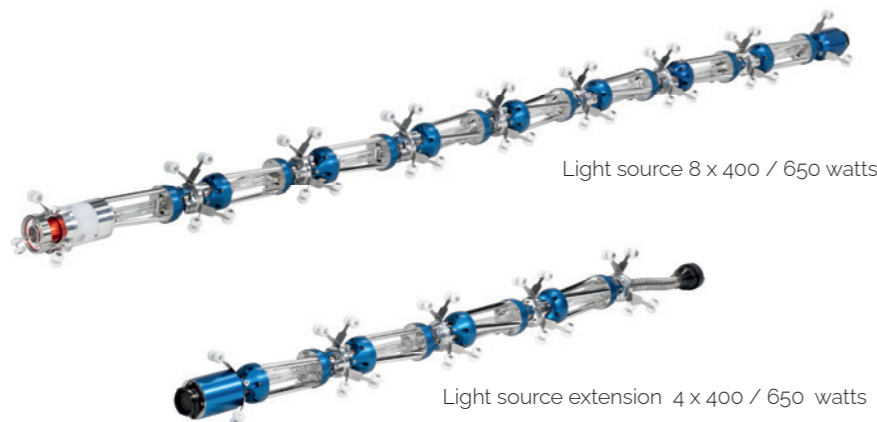
DN 150 - 1600 / 6" - 63"
12 x 400 / 650 / 1000 Watts



- 12000 watts power
- Up to 180 m / 590 ft cable length
- Temperature-resistant hybrid cable with connectors on both sides
- Lamp operating hours counter

Optional (Selection):

- Monitors for front control unit
- Packer camera



Lathing / Milling / Grinding / Contract production

ILZ GmbH was founded in January 2016 to establish a new production site for the IMS Robotics Group to attend to the increasing demand of parts and devices.

In early 2016 the opportunity to incorporate the knowledge and the existing machinery of an already existing company emerged.

By investing into more machines and technical equipment the capacity, as well as the ability to manufacture more parts was increased.

Since November 2016, ILZ is manufacturing at its premises in Dresden-Weixdorf.



Cutting tools (not only) for IMS cutting robots

For every application the right tool, individual developments possible!

Diamond tools for synthetic materials (PVC, felt liner)



Diamond tools for concrete, stoneware und GRP



Brush tools for lime, roots, synthetic materials, foil scraps



Grinding tools for iron and steel



kardiam.de

HURRICANE® Trenchless Technologie

TRENCHLESS LIKE A HURRICANE

Eco-friendly ideas for smart technology



www.hurricane-tt.de

Hurricane Trenchless Technologie GmbH, based in Maintal, Germany, develops and produces the latest and most innovative complete solutions for pipe cleaning and sewer rehabilitation. The company, which now operates worldwide, is present through the manufacture of its self-developed and versatile products for the areas of wastewater, industrial water, pressurized water, drinking water, oil, gas and district heating.



PRODUCT PORTFOLIO

Sewer cleaning nozzles
UV- and Inliner-systems
Coating systems
Shortliner systems
Vehicle equipment / Customised solutions

APPLICATION AREAS

Waste water
Drinking water
Industrial water
District heating
Gas & Oil

APPLICATION AREAS

Specialised in the development and production of high-end products for trenchless renovation

SEWER CLEANING



High-quality duct cleaning nozzles, special profile solutions - our high-performance ceramic nozzle inserts, swivels, expanders and deflection aids are made of high-quality materials in Germany.

SHORTLINER REHABILITATION



Consumables such as reaction resins and glass fibre fabric mats for partial pipe rehabilitation. Hat profiles, pressure boxes for pressurising the packers, as well as the matching push rods round off the portfolio.

PIPE SEALING BAGS & REHABILITATION PACKER



Packers and shut-off equipment for use in inspection and sewer rehabilitation. The products are made of durable and thick-walled rubber for long-lasting use.

First in Innovation

INVERSION SYSTEMS



The inversion drums and sluices are made of a corrosion-resistant stainless steel or aluminium with a temperature-resistant coating. They are user-friendly and at the same time robust in construction site use.

CALIBRATION UNITS



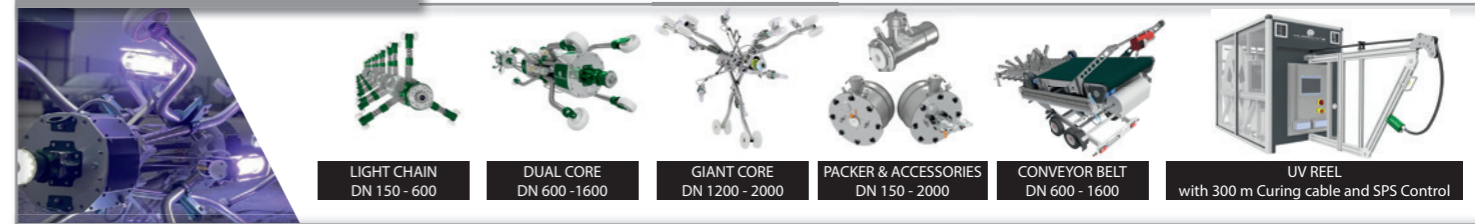
The innovative and material-friendly fulling and impregnation systems are ideally suited for the even distribution and complete impregnation of the resins in the pipe liner for trenchless sewer rehabilitation up to DN1200.

HOT WATER & STEAM CURING SYSTEMS



Powerful and innovative hot water & steam systems for controlled and fast liner curing in trenchless sewer rehabilitation DN100 - DN1400.

UV CURING SYSTEMS



Hurricane® UV CityLight curing systems developed with decades of experience by technology leaders, GRP liner material manufacturers and application engineers from Europe are characterised by constant and highest performance, safest and fastest curing and best possible control and documentation.

DISTRICT HEATING COATING & CURING SYSTEMS



The product range includes machine technology and special cement for corrosion lining. The process is suitable for lining pipes from 200 mm up to large pipes of several metres in diameter. It can be used for district heating and other industrial pipelines.

We ensure your mobility during sewer rehabilitation and work with you to configure vehicles according to your expectations. You can choose from vehicle models of all size and weight classes, equipped with our high-quality systems depending on the intended use.

Milling and cutting, rehabilitation and UV curing – the choice is yours. Of course, we also take into account additional equipment in the operating and workshop area as well as convenience features.

Expansion options:



3.5 t vehicle with cutting system

- With control room
- Cutting system DRIVE / DRIVEplus / TURBO 3



7.49 t renovation truck with UV curing system

- Iveco Daily 7,2 t or Fuso Canter 7,49 t
- UV 5200 or UV 7800



16 t truck with UV cutting system

- Mercedes Benz Atego 16 t
- TURBO 4



7.49 t truck with cutting system

- Mitsubishi Fuso Canter
- TURBO 4 system

Rental Park

We have over 100 sewer rehabilitation devices for short-term and long-term hire available for our clients. The portfolio ranges from the entry-level house connection model to the fully equipped rehabilitation truck with cutting robot or UV curing system. Accessories for all areas and further peripherals are also available.

Whether mobile or installed in a vehicle – we will find the right solution for you.

The IMS fleet is also being continuously expanded and includes fully equipped vans and trucks.

You want to make a rental enquiry or find out more about our offers? Please **call under +49 35205 755530** or send an **e-mail to miete@ims-robotics.de**.



Our service committment

Due to the special demands and stresses placed on our equipment in daily use, we focus not only on manufacturing quality but also on service. We offer you comprehensive services, provided both in our factory at the headquarters in Ottendorf-Okrilla and via our selected external partners. This enables us to ensure the highest possible availability and quality of service.

Our services at a glance:

- Comprehensive training on IMS devices
- Fast and precise repairs and maintenance
- Replacement equipment to minimise downtime
- Remote maintenance
- Implementation of software updates
- Personal contact persons for all matters

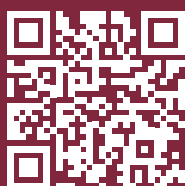
Do you have questions about the comprehensive IMS Robotics service? Then simply **call us under +49 35205 755525** or send your request via **e-mail to service@ims-robotics.de**.



IMS

ROBOTICS

ims-robotics.de



IMS Robotics GmbH · Am Bauhof 6 · D - 01458 Ottendorf-Okrilla · Germany

Telefon: Vertrieb +49 35205 7555 0 · Service +49 35205 7555 25 · Vermietung +49 35205 7555 30

Fax: +49 35205 53749 · e-mail: info@ims-robotics.de · Web: ims-robotics.de

Update: May 2022