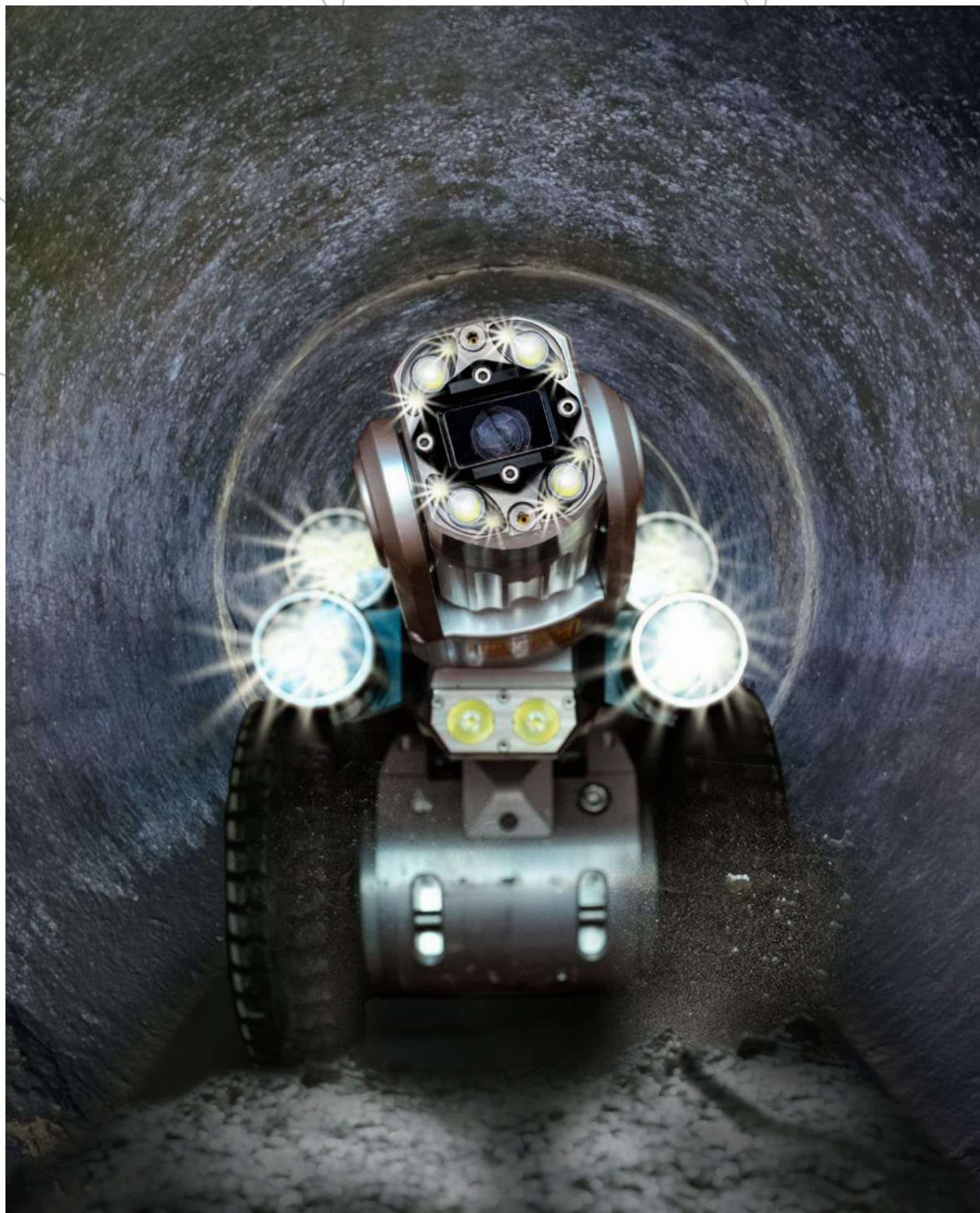


# CCTV INSPECTION





# A TRUSTED PARTNER FOR OVER 30 YEARS

## iPEK INSPECTION SYSTEMS HAVE YOU COVERED UNDERGROUND

Since the beginning, our knowledge and experience in the sewer industry have guided our work. And as we have evolved from our very first black-and-white sewer camera to today's powerful ROVION crawler system, we've pursued excellence in engineering and efficiency. Today, as part of the global IDEX group, we carry on that legacy.



iPEK's first inspection vehicle

## MEET THE ROVION SEWER INSPECTION SYSTEM

The scalable ROVION sewer inspection system is user-friendly, field-proven and fully compatible with regional and international inspection standards. More than 2,000 RAX300 cable reels and 3,000 RX130 mainline crawlers are out in the field today, working everywhere from standard sewer pipes to high-risk ATEX zones. The modular system can easily be reconfigured to a range of pipe diameters, from DN100 to DN2000. And our versatile line of accessories helps you take on any inspection job with one system: lateral launch, laser scanning, and more. Plus, ROVION is designed with quick-change wheels and easy reconfiguration features, so your crew has less downtime and setup at every manhole. Full 1080p HD is also available.



Modern workstation with DCX5000 controller

SK80

ROVVER

SUPERVISION

DIGISEWER

VISIONCONTROL

AGILIOS

SUPERVISION 

VISIONREPORT

ROVION

DESKTOPCONTROL

AGILIOS 

ROVION 

INSPECTION VANS

XPECTION

VC500

AGILIOS XR 

ROVION SAT II 

XPECTION LITE

VISIONREPORT II  
EXPERT I



**ROVION HD** 



# INSPECT MORE

## MORE RELIABLE

The ROVION sewer crawler’s rugged design leads to a lower cost of ownership and longer service life.



## MORE EFFICIENT

Deploy faster with tool-free setup and QCD quick-release fasteners.



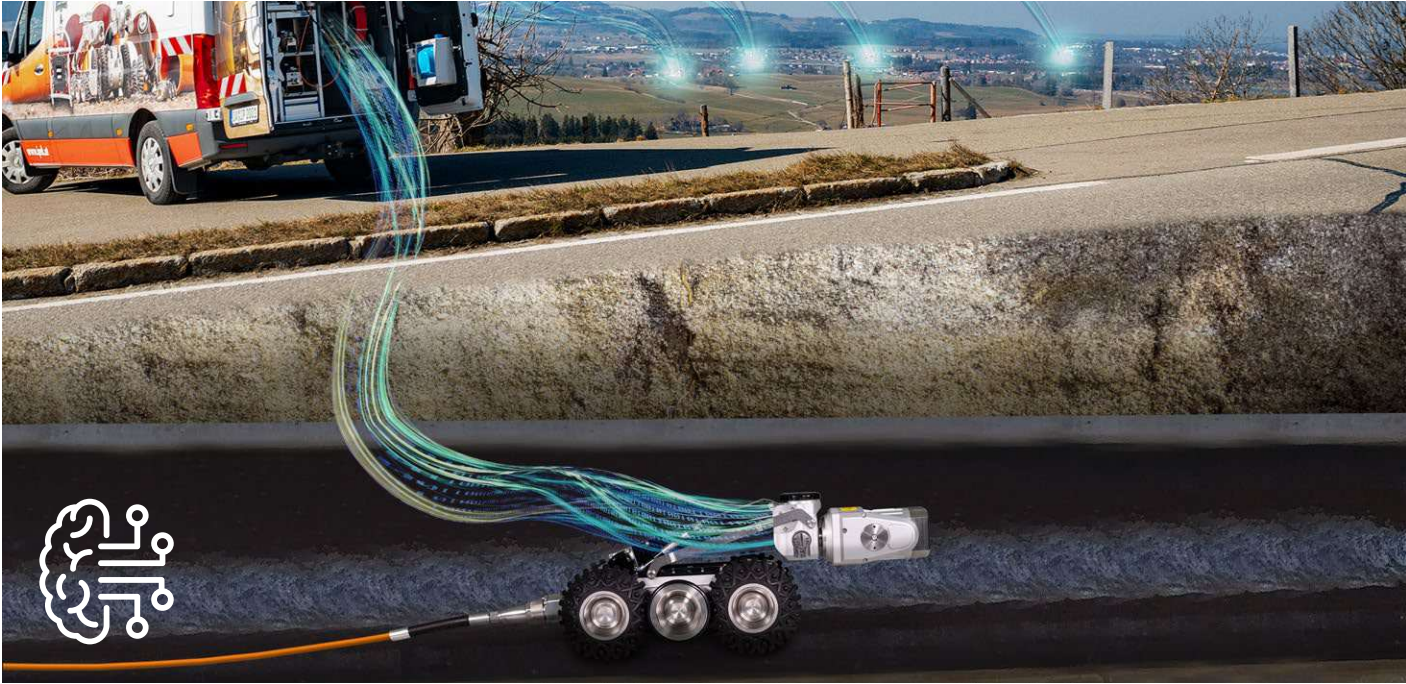
## MORE POWERFUL

Steerable six-wheel drive overcomes obstacles and navigates bends.



## MORE INTELLIGENT

Seamlessly integrated WinCan software easily transfers inspection data from the field to the office.





# INSPECT ANYWHERE





# ROVION CRAWLER

SEE MORE UNDERGROUND



Large diameter RX400 crawler in PVC pipe



# ROVION CRAWLER

READY FOR ANY SEWER CHALLENGE FROM DN150 TO DN2200 PIPE



Large diameter RX400 HD deploys in a manhole



# FIND MORE

WITH THE ROVION HD INSPECTION SYSTEM



## FULL HD

Identify more sewer defects and meet current and future standards with SD, 720p HD, and 1080p HD options. Throttle resolution to meet the data size and video quality requirements of any client, without complicating inspection workflows. The Full-HD video quality is always displayed on your inspection monitor or VC500 HD controller screen.

## BETTER PICTURE

Higher video quality and resolution makes it easier for operators to find cracks and other defects faster. Enhanced visibility increases coder and reporting accuracy.

## ACCURATE

When it comes to accurate inspections, every millimeter counts. More pixels give you greater control over the laser measurement feature, so you can deliver reliable reports on every job.

## HI-RES

Send full HD video with greater pipe detail than ever before.

## USER FRIENDLY

Achieve full HD video quality with a copper cable that relies on just six conductors but boasts a 1000-lb breaking strain. And if the worst does happen, the cable can be serviced and reterminated in the field.



# FULL-HD CRAWLER SYSTEMS

READY FOR THE FUTURE



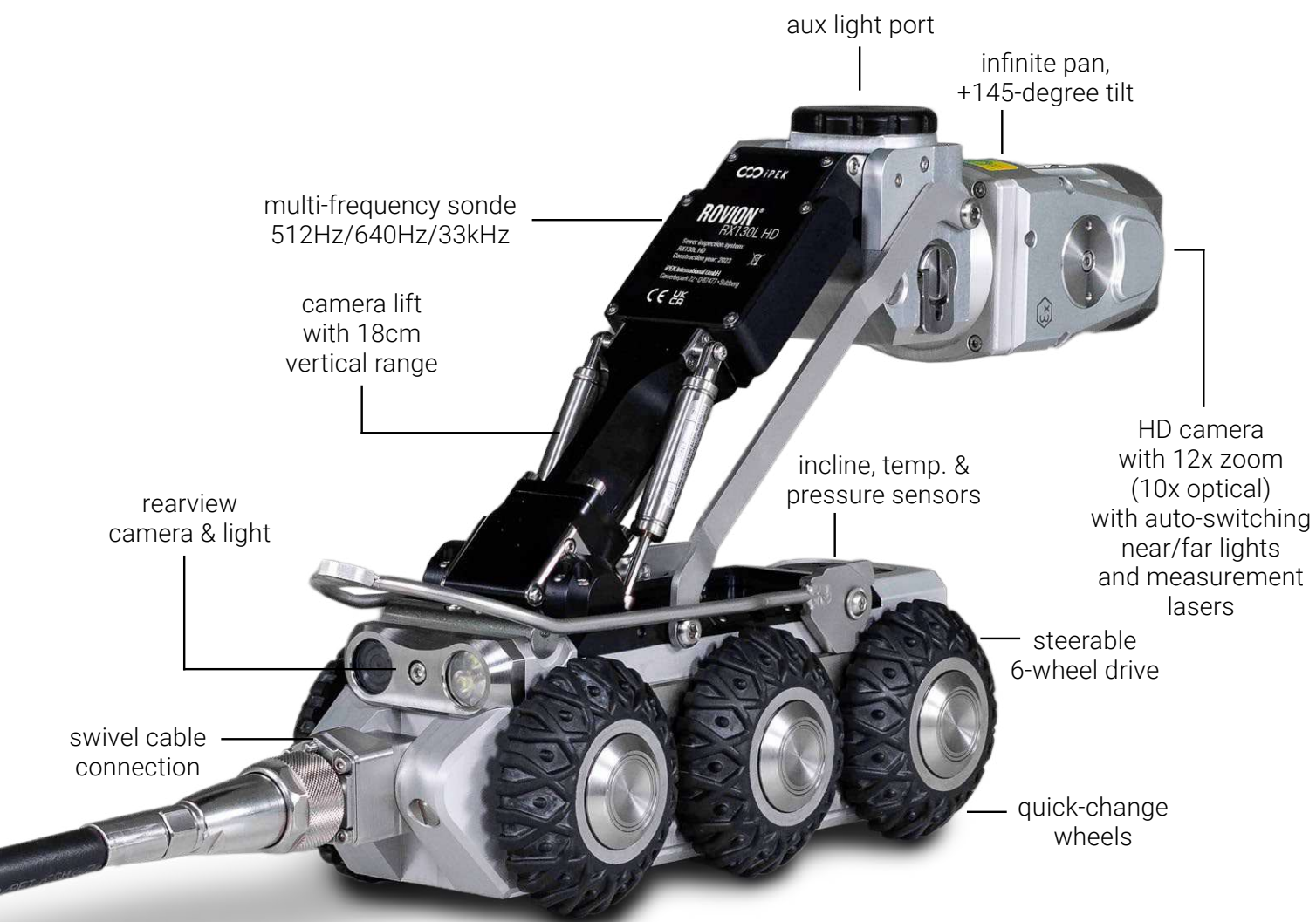
RX130 HD Mainline crawler



# READY FOR ANY JOB

## WITH OUR ROVION INSPECTION SYSTEM

When you choose ROVION HD, you prioritise productivity. Advanced features ensure that your team collects crystal clear footage and actionable data from any line with minimal disruptions.



### AGILE

Power past obstacles that sideline other crawlers. With steerable six-wheel drive, ROVION HD avoids obstructions and climbs over debris and offsets. An array of onboard sensors helps you avoid hazards.

### RELIABLE

Stay on schedule and within budget with ROVION HD's industry-low downtime and cost-of-ownership. Not only is it built to endure punishment, its intuitive design lets you perform routine maintenance right in the field.

### SIMPLE

Cut out complexity for your crew with technology that's easy to learn and use, a responsive support team, and a regional service network that delivers rapid turnaround.

# SCALABLE

## ONE SYSTEM FOR ANY INSPECTION TASKS

Once you own the ROVION HD platform, special accessories and attachments give you plug-and-play capability, so you can meet any inspection challenge.

### SMALL DIAMETER

The RX95 HD crawler fits into relined 100mm pipes to inspect laterals and industrial lines.



### LARGE DIAMETER

The RX400 HD crawler is ideal for interceptors and trunk lines, and its integral camera lift rises above high flows. Tackle DN2200 pipes and larger.



### LATERAL LAUNCH

SAT II can drive 300m into mainlines and then launch 45m into laterals to locate misconnections and illegal flows.



### LASER SCANNING

Measure pipe ovality, erosion and defects: ROVION's laser profiling attachment captures accurate geometry.



### THE RIGHT CABLE RANGE FOR THE JOB

Choose from 200m manual or 300m or 500m automatic drums.





# FROM SD TO HD TO FULL-HD

INSPECT SMARTER WITH VARIABLE VIDEO RESOLUTION





# MORE INTELLIGENT

## WITH THE ROVION HD CRAWLER SYSTEM



### FAST AND EASY CONTROL

This remote control puts all major crawler and reel functions in the palm of your hand, and it comes standard with every automatic ROVION HD system.



**NEED EVEN MORE?**  
For maximum productivity, this optional desktop command center offers precision control, full QWERTY keyboard and ergonomic comfort.

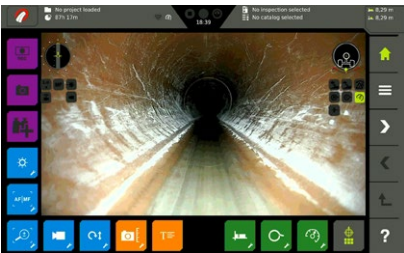
### PIPE RUN VISUALIZATION

Create a pipe route diagram for your clients during inspection – quickly and easily



### OPERATE

Control every ROVION function by using twin multifunction joysticks, intuitive touchscreen controls and real-time feedback. On-screen notifications help warn against operating hazards.



### OVERLAY TEXT

With drag-and-drop simplicity, create an overlay that has static text, live data, observation details and your logo. Customise text position, colour and background to your preference.



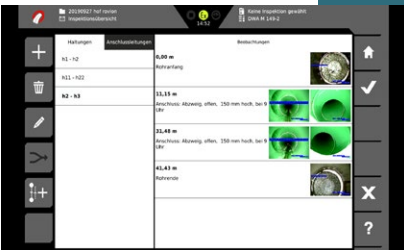
### MEASURE DEFECTS

Powerful measurement tools let you size up cracks, water level, pipe diameter, wall features, bend angles, inclination and much more.



### ENTER OBSERVATIONS

Create an inspection, then log observations with help from onboard defect catalogs, including WRc 3, 4, 5.



### CREATE REPORTS

Generate PDF reports of completed inspections, then deliver them via USB drive or WinCan Web



### CONNECTED

Wirelessly upload your inspections directly to WinCan Web, the cloud platform for sewer inspection data. Review, edit, analyze and map inspection data online, and securely share results with your entire team.



Scan to set up your free WinCan Web trial account:





**MADE TO ACHIEVE MORE**

POWERFUL LATERAL LAUNCH SOLUTION



Lateral launch crawler RX140SAT II



# FARTHER, FASTER, BETTER

## RX140SAT II LATERAL LAUNCH CRAWLER

Convert your lateral launch crawler from DN150 to DN2000 in less than a minute without tools and lose no time during your inspection. The 8x8 all-wheel drive overcomes obstacles in the sewer with ease.



\*compared to the previous model RX140SAT

Pan/tilt launch aiming mechanism with variable length chutes for launching in main lines

Quick-change wheels to address any pipe size and material

Steerable 8-wheel drive to overcome obstacles

Detachable camera head with 360-degree rotation, +120/-30 degree tilt, adjustable illumination and sonde transmitter

Pan/tilt targeting camera with 5 megapixel imager and 130-degree field-of-view

Hinged midsection for deployment through tight access points

Belt-drive mechanism for maximum pushing power and minimal push rod wear

Rear-view camera and lights for trouble-free reverse travel

## SEE MORE THAN EVER BEFORE

Powerful long-range drive and launch capabilities allow more insight underground.

### INSPECT FARTHER

Extend your daily work to 45m in laterals and up to 300m in mainlines, with a pipe diameter from DN150 to DN2000 in the main sewer and from DN50 to DN300 in laterals with a single crawler.

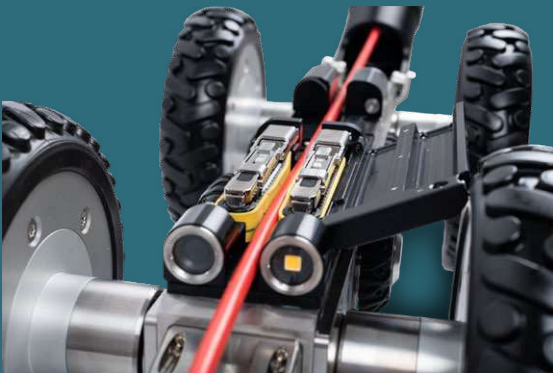


### INSPECT FASTER

Powerful motors and 8x8 all-wheel drive let you launch into laterals at up to 30m/minute. This steerable, agile crawler can overcome any obstacle thrown its way. And the powerful integrated push rod can inspect laterals as fast as 7m/minute.

### INSPECT BETTER

The complete system is optimised to use in rugged underground environments. And when it does need service or reconfiguration, most parts can be swapped out without tools.





# AGILIOS

THE PUSH CAMERA SYSTEM FOR EVERY JOB SITE



Push rod system AGILIOS XR60 & XR100



# INSPECT MORE

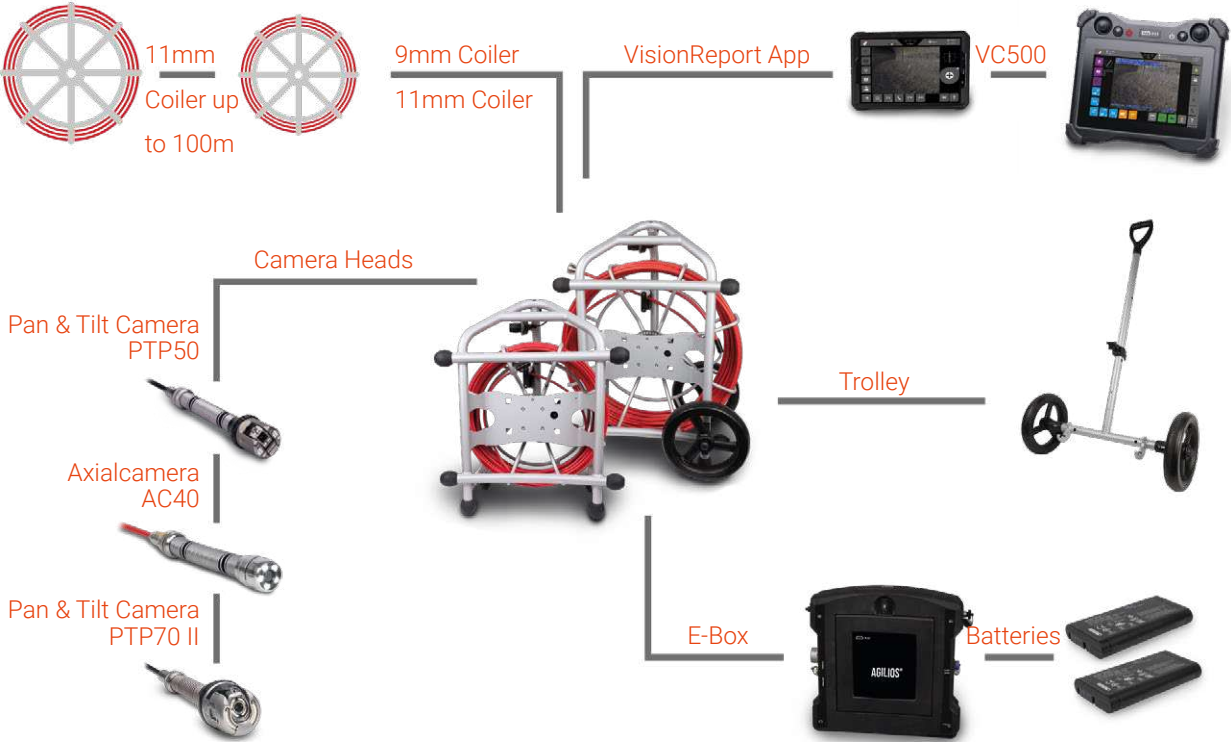
## EASY INSPECTIONS IN ANY SITUATION

The latest generation of AGILIOS push camera was built for “Inspections in all situations”. The system’s ultralight reel provides maximum stability on rugged job sites, and two battery packs power a full six hours of inspection without charging or additional power supply. AGILIOS can travel to even the most remote locations. And with flexible control and positioning options, it’s easy to operate no matter where you are.

What’s more, the modular design gives you the freedom to decide whether you need a nimble, portable camera system or a heavy duty documentation solution. If your needs change in the future, AGILIOS offers simple extension and upgrade options. With exchangeable E-Box and reel, AGILIOS is easier to maintain and service, meaning less downtime and delay for your crew.



## AS VERSATILE AS YOU ARE



## SPECIALIZED SOFTWARE GETS THE JOB DONE

Choose the right tech for your needs. AGILIOS is compatible with both a simple tablet-based app and the powerful VC500 inspection controller.

### VISION REPORT APP

Quick and easy inspections, right from your tablet. The AGILIOS App uses a standard Wi-Fi connection to capture footage.



### DOWNLOAD VISIONREPORT APP PLAYSTORE

We recommend using a Samsung tablet (up to 5SE) and Android OS 9.0 (later versions are not tested and compatibility cannot be guaranteed).

### VISION REPORT II STARTER, STANDARD & EXPERT I

These are software packages for the VC500 operating software VisionReport II. The simplest package is the starter package. It contains all the options for controlling the camera system and for capturing simple projects with videos and images. This is followed by the standard package, which is ideal for sewer inspection with standard-compliant inspection reports and, in addition to the starter package, contains data acquisition according to Isybau and DWA standards.

### STAY SAFE IN EX-ZONES

Safety is key, especially at hazardous work sites. The AGILIOS EX inspection system can operate confidently in zones with explosive atmospheres (ATEX zones 1 and 2). Individually pressure-encapsulated system components enable quick set-up and easy service to limit exposure times.





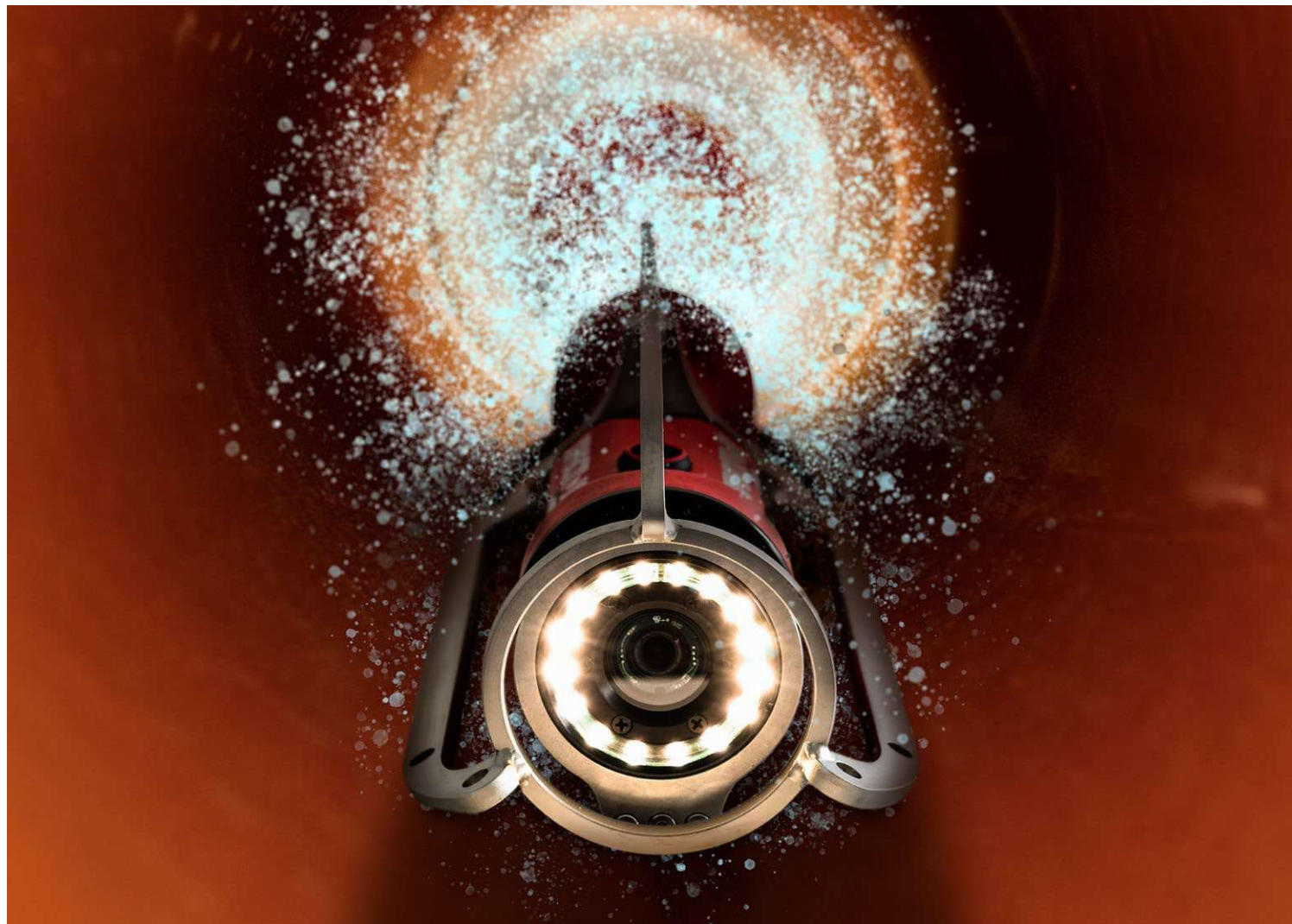
# XPECTION LITE

CAPTURE CRISP HD VIDEO FROM  
EVERY PIPE YOU CLEAN

XPECTION LITE is the quick and easy way to see what you are jetting, so you can make smarter choices and be more productive. And while the system is affordable enough to put on every cleaning truck, it captures high-value footage of pipe condition.

Use it:

- to confirm sewer cleaning using before/after footage
- to assess condition and locate offsets, collapses, infiltration and more
- to avoid hazards, including collapses, protruding taps, root balls and anything else that could trap a nozzle
- to pick your cleaning nozzle based on presence of gravel, grease, mud, roots or sludge
- to save money by assessing pipes without a CCTV van
- to be on the safe side and to check for transverse holes before cutting roots



# QUICKVIEW AIR-HD

POWERFUL ZOOM TECHNOLOGY  
FOR RAPID SEWER ASSESSMENT

Quickview's app-based touchscreen control lets you wirelessly control the camera's zoom and tilt, adjust lighting, display text, view live and recorded videos and upload results to the cloud. The app is compatible with your iOS, Android or Windows device. Precision optics and powerful lighting ensure high-resolution footage.

- Quad-Haloptic light engine maximizes viewing distance and side wall illumination.
- HD camera delivers four times more detail than standard resolution.
- Low-lux imager captures enhanced images from darker/farther regions.





# YOUR IPEK SERVICE & SALES



We are close to our customers thanks to our partners. More than 80 service and sales locations worldwide make us to one of the leading international manufacturers of sewer inspection technology.

Our partners are part of the iPEK family. When you work in the toughest of environments, you need technology, service and support you can trust. This sense of collaboration and teamwork has empowered us to meet customers' needs from our earliest years until today. iPEK's global service network means better quality and reliability for all members of the international sewer industry.